

Customizable comfort  
for the perfect fit.



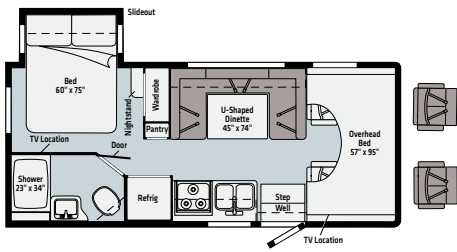
# SPIRIT

QUALITY INNOVATION SERVICE

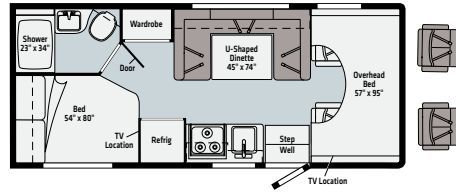
## Family-Friendly Adventure to go

- **POWER TO SPARE** What was once considered above and beyond now comes standard: enjoy a second coach battery, 1,000W inverter, powered patio awning, radio/rearview monitor system and more.
- **FLEXIBLE SLEEPING** Ideal for families of all shapes and sizes, each of the Spirit's six available floorplans include a rear bedroom, cabover bunk, bunk beds (31H) and sofa/bed (NA 22M, 22R) – so there's sure to be a configuration that fits your needs.
- **TRANSITIONAL DÉCOR** Select from three Winnebago Design Studio inspired transitional décor options for a contemporary or cozy cabin look that fits your style.
- **KITCHEN LUXURY** The beauty of the galley is in the details, like durable Corian® solid surface countertops, recessed 3-burner range with glass covered oven (NA 22R), stainless steel sink, double-door refrigerator and expansive pantry (22M, 31K, 31H), all designed to make you feel right at home.
- **FLEXIBLE RELAXATION** The Spirit offers a U-shaped dinette that nimbly converts to a comfortable bed. (NA 25B) For special movie nights, Theater Seating is also available on the 26T, 31H an K floorplans.

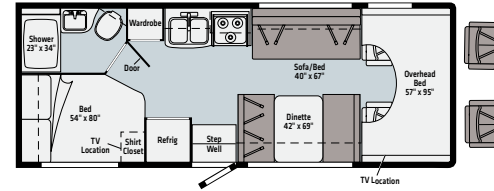
**WINNEBAGO**



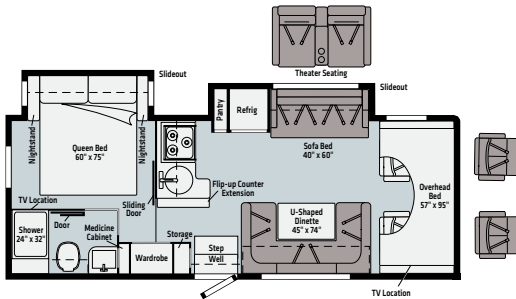
**22M**



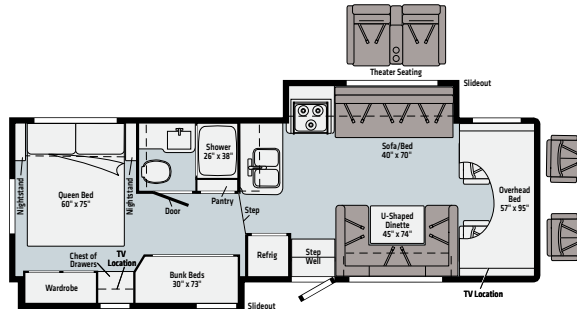
**22R**



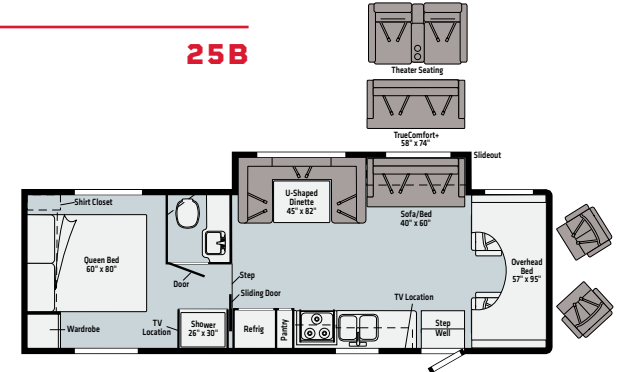
**25B**



**26T NEW**



**31H NEW**



**31K**

## WEIGHTS | MEASURES

	<b>22M</b>	<b>22R</b>	<b>25B</b>	<b>26T</b>	<b>31H</b>	<b>31K</b>
Length	24'5"	23'10"	26'4"	27'1"	32'9"	32'9"
Exterior Height <sup>1</sup>	10'11" <sup>A</sup> /11' <sup>B</sup>	10'11" <sup>A</sup> /11' <sup>B</sup>	11'	11'	11'	11'
Exterior Width <sup>2</sup>	8'5.5"	8'5.5"	8'5.5"	8'5.5"	8'5.5"	8'5.5"
Exterior Storage <sup>3</sup> (cu. ft.)	44.5	60.4	73.1	45	85	108.3
Awning Length	14'	14'	17'	17'	10'4"	20'
Interior Height	6'10"/6'5.5"*	6'10"	6'10"	6'10"/6'5.5"*	6'10"/6'5.5"*	6'10"/6'5.5"*
Interior Width	8'	8'	8'	8'	8'	8'
Freshwater Tank Capacity <sup>4</sup> (gal.)	40	40	40	44	44	44
Water Heater Capacity (gal.)	6	6	6	6	6	6
Holding Tank Capacity - Black/Gray <sup>4</sup> (gal.)	40/45	21/24	21/26	35/39	37/34	30/30
LP Capacity <sup>5</sup> (lbs.)	76.14	76.14	76.14	76.14	76.14	76.14
Fuel Capacity (gal.)	55	55	55	55	55	55
GCWR <sup>6</sup> (lbs.)	18,500 <sup>A</sup> /22,000 <sup>B</sup>	18,500 <sup>A</sup> /22,000 <sup>B</sup>	22,000 <sup>B</sup>	22,000 <sup>B</sup>	22,000 <sup>B</sup>	22,000 <sup>B</sup>
GVWR (lbs.)	11,500 <sup>A</sup> /14,500 <sup>B</sup>	11,500 <sup>A</sup> /14,500 <sup>B</sup>	14,500 <sup>B</sup>	14,500 <sup>B</sup>	14,500 <sup>B</sup>	14,500 <sup>B</sup>
GAWR - Front (lbs.)	4,600 <sup>A</sup> /5,000 <sup>B</sup>	4,600 <sup>A</sup> /5,000 <sup>B</sup>	5,000 <sup>B</sup>	5,000 <sup>B</sup>	5,000 <sup>B</sup>	5,000 <sup>B</sup>
GAWR - Rear (lbs.)	7,800 <sup>A</sup> /9,600 <sup>B</sup>	7,800 <sup>A</sup> /9,600 <sup>B</sup>	9,600 <sup>B</sup>	9,600 <sup>B</sup>	9,600 <sup>B</sup>	9,600 <sup>B</sup>
Wheelbase	158"	158"	182"	190"	220"	220"

\* Rear of Coach    <sup>A</sup> Ford E350 Chassis    <sup>B</sup> Ford E450 Chassis

**Note:** Dimensions shown are for sleeping and shower space only and may vary due to styling differences.

- The height of each model is measured to the top of the tallest standard feature and is based on the curb weight of a typically equipped unit. The actual height of your vehicle may vary by several inches depending on chassis or equipment variations. Contact your dealer for further information.
- Floorplans feature a wide-body design - over 96". You should be aware that some states restrict access on some or all state roads to 96" in body width. You should confirm the road usage laws in the states of interest to you.
- The load capacity of your motorhome is designated by weight, not by volume, so you cannot necessarily use all available space when loading your motorhome.
- Capacities are based on measurements prior to tank installation. Slight capacity variations can result.
- Capacities shown are the tank manufacturer's listed water capacity (W.C.). Actual filled propane capacity is 80% of listing due to overfilling prevention device on tank.
- Actual towing capacity is dependent on your particular loading and towing circumstances which includes the GVWR, GAWR, and GCWR as well as adequate trailer brakes. Refer to the chassis operator's manual of your motorhome for further towing information.

Because features, specifications, equipment, and options may vary from those highlighted in this brochure, the buyer is responsible for confirming with the dealer the features, specifications, equipment, and options included on their specific vehicle. In addition, Winnebago's program of continuous product improvement may result in changes to vehicle specifications, equipment, model availability, and price without notice.

Dashed lines denote overhead storage areas. Floorplans and specifications are also available online at [Winnebago.com](http://Winnebago.com)

**LaMESA REC VAN**

LaMesaRV.com  
800-496-8778